



Union-Snyder  
**COMMUNITY ACTION**  
AGENCY

**2023**

**Annual Report**



[www.union-snydercaa.org](http://www.union-snydercaa.org)

(570) 374-0181



---

# Tripartite Advisory Board

**Doug Bertanzetti, Summit Early Learning, Low-Income Sector Rep**  
**Amy Bortz, Domestic Relations for Union County, Elected Official Appointee**  
**Mary Lyn Cadman, CMSU, Chair, Elected Official Appointee**  
**Sarah Erdman, Mid-West School Board, Elected Official**  
**Matt Ernst, Union County CYS, Elected Official Appointee**  
**Kelly Feiler, The Regional Engagement Center, Private Sector**  
**Mary Freeman, North Penn Legal Services, Private Sector**  
**Chris Hayes, Vice Chair, Nurse-Family Partnership, Private Sector**  
**Holly Kyle, Union-Snyder Agency on Aging, Low-Income Sector Rep**  
**Phyllis Marquette, Volunteer, Low-Income Sector Representative**  
**John Mathias, Community Member, Private Sector**  
**Kurt Nelson, Bucknell University Chaplin, Private**  
**Alicia Saxon, Volunteer, Low-Income Sector Representative**  
**Bo Trawitz, Magisterial District Judge 17-304, Elected Official**  
**Rose Williams, Getting Ahead Foundation, Low-Income Sector Rep**

## Joinder Board of Commissioners

**Preston Boop, Union, Co-Chair**  
**Adam Ewig, Snyder, Co-Chair**  
**Joe Kantz, Snyder**  
**Jeff Reber, Union**  
**Stacy Richards, Union**  
**Joe Steininger, Snyder**

# Vision & Mission

## Vision

We envision a future where all residents of Union and Snyder Counties have equal opportunity to reach their full social, civic, and economic potential.

## Mission

Our mission is to reduce poverty in Union and Snyder Counties through self-sufficiency initiatives for families and individuals in collaboration with our community partners.



## Core Values

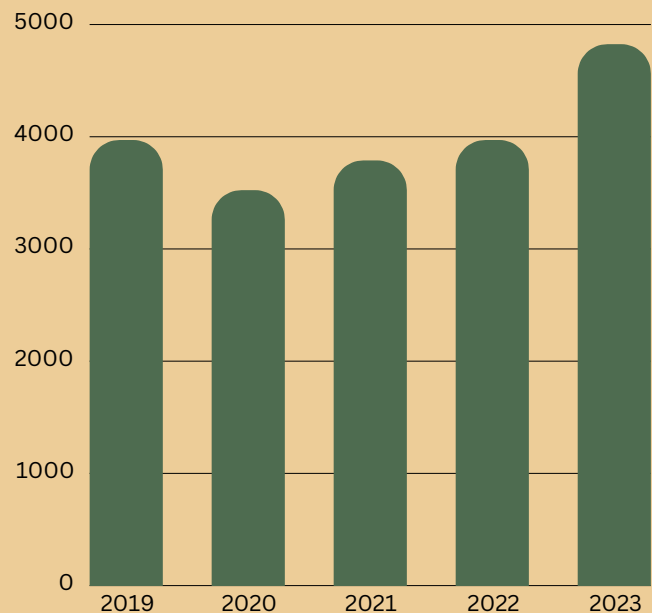
- WE VALUE THE EMPOWERMENT OF OTHERS
- WE VALUE ACCEPTANCE AND RESPECT
- WE VALUE DIVERSITY
- WE VALUE POSITIVE TEAMWORK
- WE VALUE TRUST THROUGH INTEGRITY

# CAA IMPACT ON PEOPLE SERVED

## Number of individuals with low-income served in 2023

Unduplicated number of persons served: **4,825**

**2022 we served 4,532**  
**2021 we served 3,789**  
**2020 we served 3,524**  
**2019 we served 3,971**



## 4,419 households served in 2023

**Of those who reported their age,**  
**65% were individuals aged 1-59**  
**35% were seniors aged 60+**

**20% of CAA households served by CAA were**  
**single-parent families**



# CAA IMPACT ON PEOPLE SERVED

## Housing

Customers who maintained safe and affordable housing:

**372**

ERAP approvals since 2021:

**5,783**



## VITA

**539** Federal Returns

**554** State Returns

**\$551,347** received in refunds

**\$42,111** received in Rent/Property Rebates



## Energy

Number of residents enrolled in PPL and UGI Energy Assistance Programs:

**2,522**



Number of customers who received transportation support in their time of need: **52**



## Case Coordination & Service Navigation

**590** Households served

**919** Volunteer Hours



Veterans Served: **331**



# 2023 Food and Nutrition Statistics



**11,269** food and nutrition services



Total individuals served: **2,531**



**19,189** total non-perishable pounds distributed and **12,641 perishables** (mostly produce) for a total of **31,830 pounds** for the year.

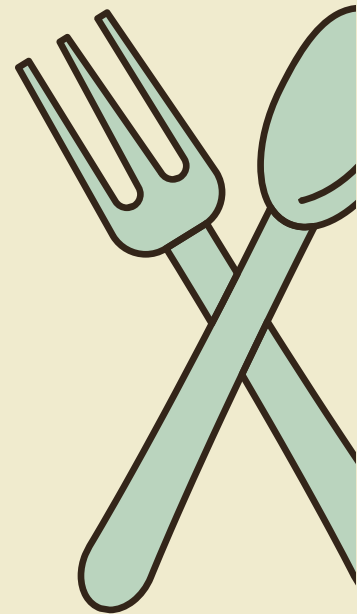
**941** individuals served through the Pop-up Produce Stand



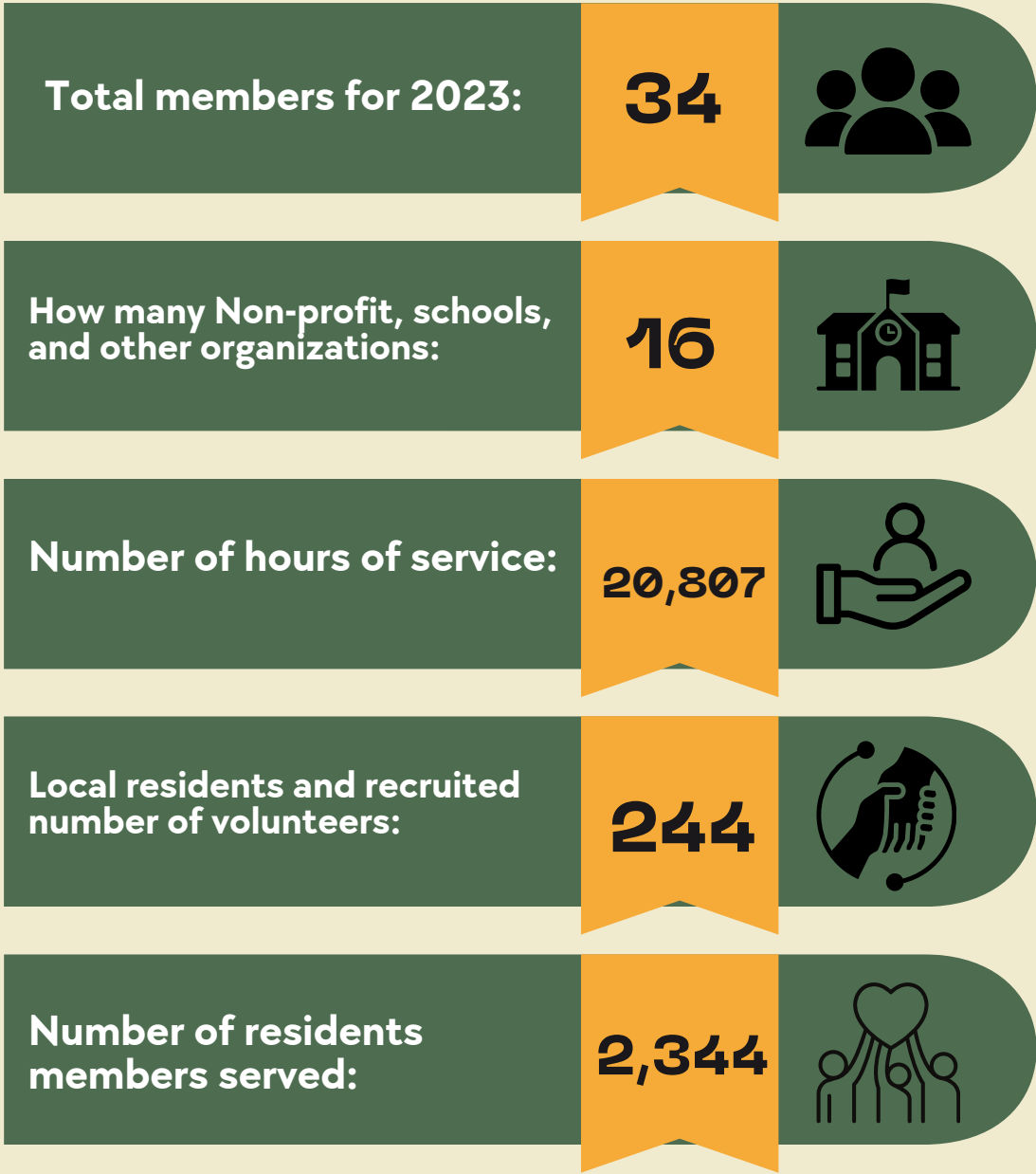
**607** emergency customers served with food



**983** individuals served through outreach events



# Community Members Mobilized in Community Revitalization and Anti-Poverty Initiatives Via CORE Susquehanna AmeriCorps



# Financial Overview

## Statement of Financial Position

### Assets

Cash & Cash Equivalents	\$2,353,810
Accounts Receivable	\$376,480
Prepaid Expenses	\$45,521
<b>Total Assets</b>	<b>\$2,775,811</b>

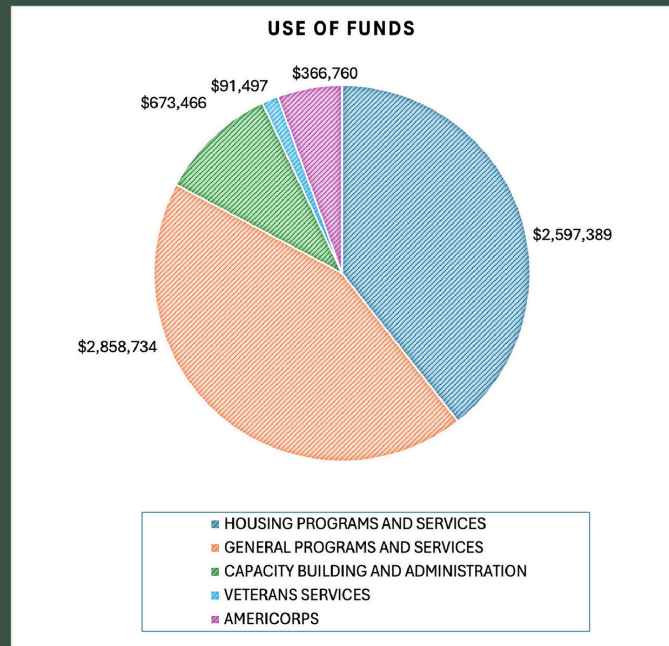
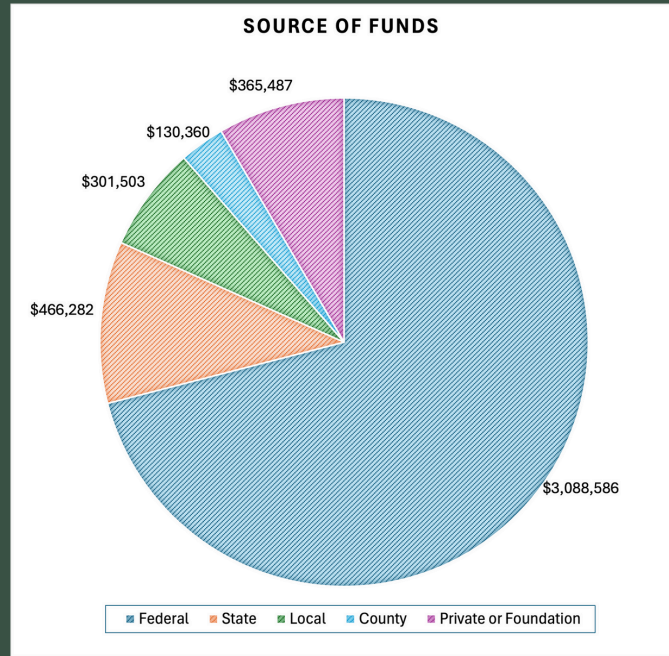
### Liabilities

Deferred Revenue	\$1,564,234
Accounts Payable	\$25,641
Accrued Payroll	\$32,042
Payroll Taxes Withheld & Accrued	\$23,187
<b>Total Liabilities</b>	<b>\$1,645,604</b>

**Total Net Assets** \$1,130,707

**Liabilities and Net Assets** \$2,275,811




## Source and Use of Funds





# Population



Report Area	Total Population, 2010 Census	Total Population, 2020 Census	Population Change, 2010-2020	Population Change, 2010-2020 Percent
Union and Snyder Counties 	84,649	82,417	-2,232	-2.64%
Pennsylvania 	12,702,385	13,002,700	300,315	2.36%
United States 	312,471,161	334,735,155	22,263,994	7.13%

# Poverty

2021 poverty estimates show a total of **7,782 persons** living below the poverty level in the report area. Poverty information is at **100%** of the federal poverty income guidelines.

Report Area	All Ages No. of Persons	All Ages Poverty Rate	Age 0-17 No. of Persons	Age 0-17 Poverty Rate	Age 5-17 No. of Persons	Age 5-17 Poverty Rate
Union and Snyder Counties	7,782	10.87%	1,826	11.79%	1,301	11.38%
Pennsylvania	1,503,929	12%	429,209	16.3%	303,178	15.5%
United States	41,393,176	12.8%	12,243,219	16.9%	8,636,275	16.1%

- CAA's service area is considered **rural**.
- **USDA Pennsylvania rural definitions State Level Maps** show both counties defined as rural using the three rural definitions based on Census Places, three rural definitions based on Census Urban Areas and defined as rural based on Office of Management and Budget (OMB) metro counties indicators.
- While Union and Snyder Counties have small town centers with higher population densities (Urban Cluster), both counties are considered **Rural**.

Urban and Rural, Pennsylvania Counties: 2010 Source: U.S. Bureau of the Census; 2010 Census Urban and Rural Classification

# Message from the Director



## Letter from the Executive Director

Dear Friends,  
I'm very happy to share highlights of Union-Snyder Community Action Agency's 2023 activities, programs, and results.

Thanks to our dedicated and talented team, we successfully adapted to the needs of our community as we pivoted to a post-COVID-19 pandemic framework. A return to normal is what we may have hoped for, but normal is a relative term, and our community response continues to evolve.

We look forward to celebrating the 60th anniversary of Community Action in 2024 with a renewed focus on multi-generational support for the post-pandemic community. Through support across the whole family as they uncover barriers, work toward their goals, and follow their path beyond self-sufficiency to prosperity.

Thank you for helping us serve our community members to achieve abundance and prosperity.

Best regards,

Sue Auman  
Executive Director



Union-Snyder  
**COMMUNITY ACTION**  
AGENCY

[www.union-snydercaa.org](http://www.union-snydercaa.org)

(570) 374-0181